

가 . 가
가 가

,
1994 10

.
가
가

,
가
.

가

가

.

,
,
,

.

,

1. ()
- 2.
- 3.
- 4.
- 5.
- 6.
- 7.

.

가 . 가, 가

가 . 가

, 가

.

1. **(Integration into the environment)**
2. 가 **(Fulfillment of purpose-function)**
3. **(Order and unity of the structure)**
4. , **(Color, surface texture and Light)**
5. **(Character)**

가 .

2.

가 가 .
가 가 .
가 가 , ,
가 ,
가 ,
가 ,
가 .
가 .
가 , PS .



Stuttgart
(Schleich)

J. Schleich
(Schleich)

.

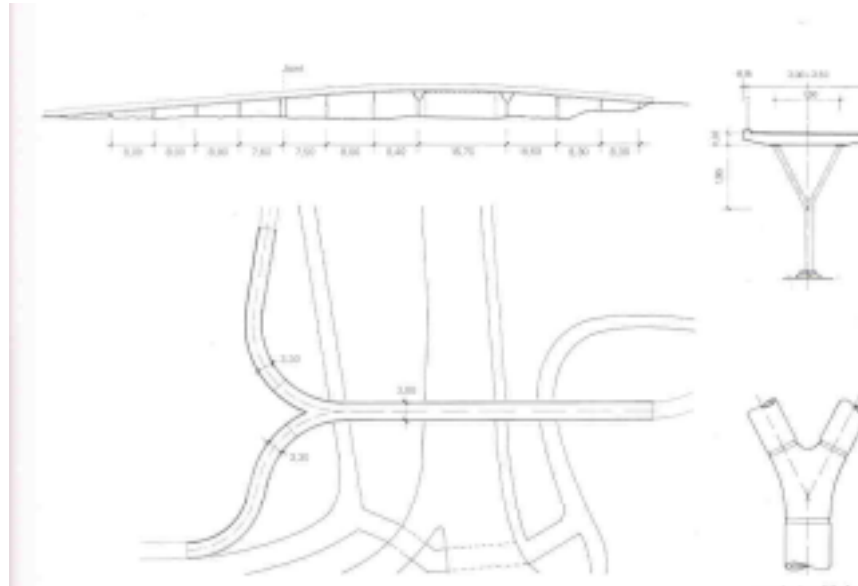
가

.

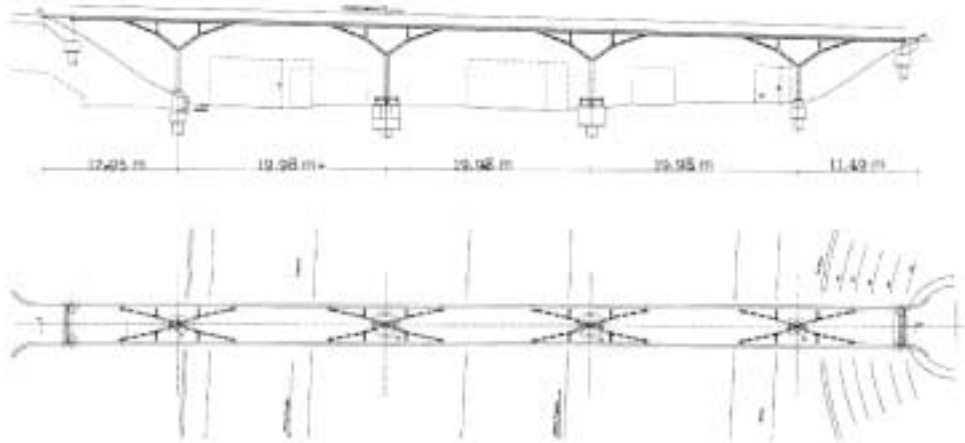
1. **(Lightness and Transparency)**
2. **(Filigree)**
3. **(Diversity and Manifoldness)**
4. **(Harmony with Natural Environment)**

2.1

The Sindelfingen footbridge



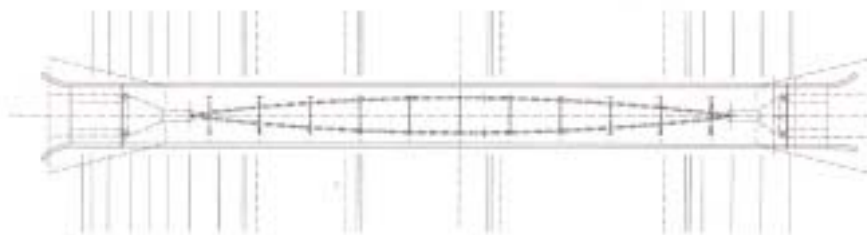
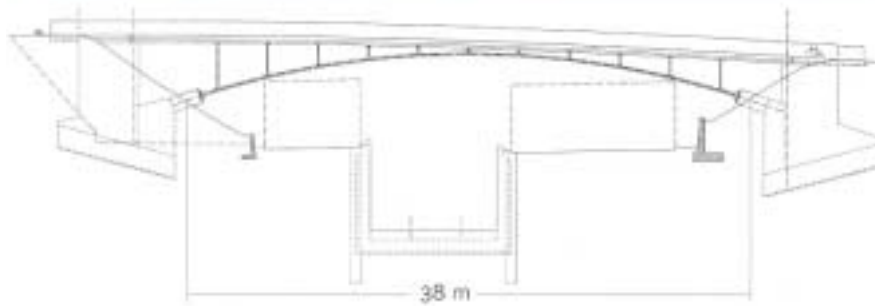
The Paragsattel II footbridge



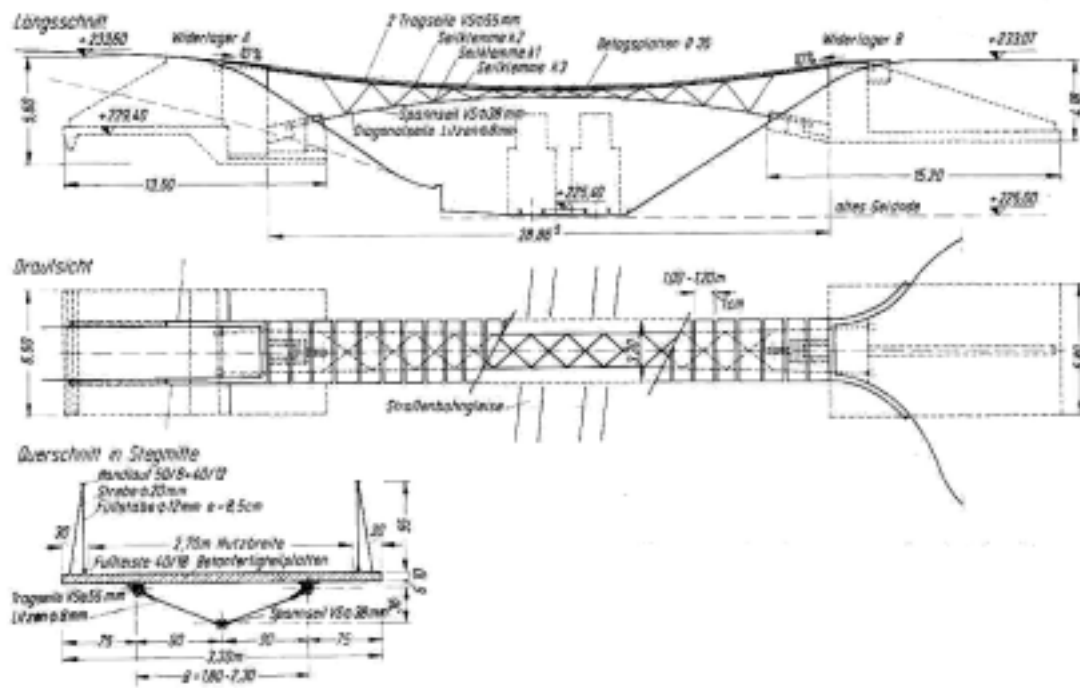
Pre-assembly of a tree-column from tubes with cast steel joints



The Paragsattel I footbridge



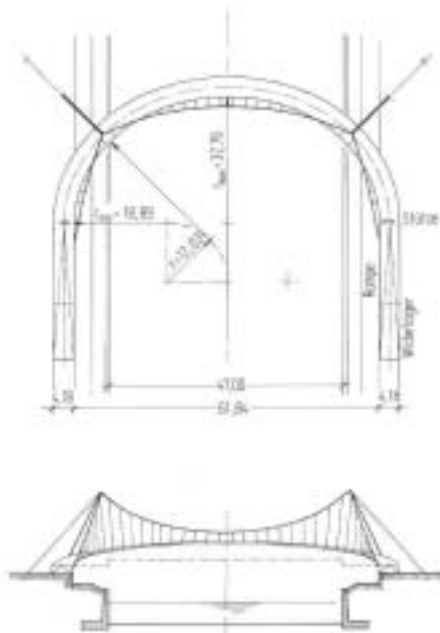
Rosenstein II



2.2



Kelheim footbridge





Approaching bridge through the park

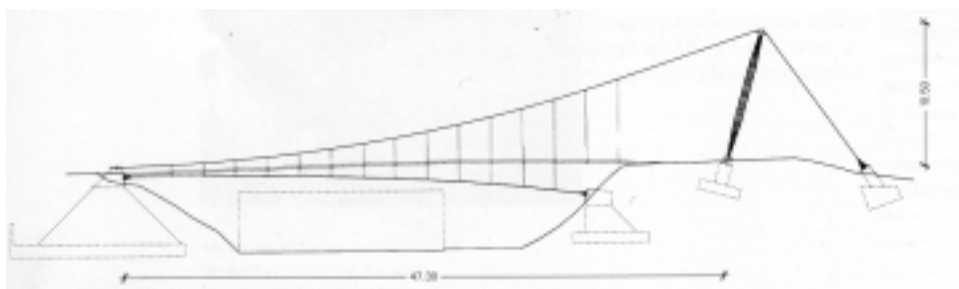




2.3



The Kochenhofstrabe footbridge



The Nordbahnhof crossing



2.4





